

Classification:  
EL09-050b

Reference:  
ITB10-010b

COPYRIGHT© NISSAN NORTH AMERICA, INC.  
Date:  
May 13, 2010

## 2008 – 2009 G37 COUPE; BATTERY LOW VOLTAGE / NO START

This bulletin has been amended. Several changes have been made. Please discard previous versions.

**APPLIED VEHICLES:** 2008 – 2009 G37 Coupe (CV36)

### IF YOU CONFIRM

An Applied Vehicle has a “battery low voltage” or “no start condition” due to a specific customer use pattern (see **Repair Overview** on page 3 of this bulletin).

**NOTE:** A battery low voltage condition may cause an engine “no crank” or “no start” condition.

### ACTIONS

1. Confirm this bulletin applies (see **Repair Overview** flowchart on page 3).

**NOTE:** If the customer use pattern DOES NOT MATCH the description in the **Repair Overview** this bulletin DOES NOT APPLY. Go back to ASIST for further diagnostic and repair information.

2. If this bulletin applies, use the **Repair Overview** flowchart on page 3 to determine which repair procedures to apply to your vehicle.

**IMPORTANT:** The purpose of **ACTIONS** (above) is to give you a quick idea of the work you will be performing. You **MUST** closely follow the entire **Repair Overview** as it contains information that is essential to successfully completing this repair.

Infiniti Bulletins are intended for use by qualified technicians, not 'do-it-yourselfers'. Qualified technicians are properly trained individuals who have the equipment, tools, safety instruction, and know-how to do a job properly and safely. **NOTE:** If you believe that a described condition may apply to a particular vehicle, **DO NOT** assume that it does. See your Infiniti dealer to determine if this applies to your vehicle.

## PARTS INFORMATION

DESCRIPTION	PART NUMBER	QUANTITY
Battery (GR24-series)	999M1-QC24F	1
Vent Control Valve	14935-JF00A	1; if needed

## CLAIMS INFORMATION

Submit a Primary Failed (PP) type line claim using the following claims coding.

DESCRIPTION	PFP	OP CODE	SYM	DIA	FRT
Reprogram ECM	(1)	DE97AA	ZE	32	(2)

(1) Use C-III to obtain the current ECM Part Number from the vehicle and use it as the PFP.

(2) Reference the current Infiniti Warranty Flat Rate Manual and use the indicated flat rate time.

### AND/OR on the same repair line

DESCRIPTION	PFP	OP CODE	SYM	DIA	FRT
Replace Battery	(1)	GB16AA	ZE	32	(2)

(1) Use C-III to obtain the current ECM Part Number from the vehicle and use it as the PFP.

(2) Reference the current Infiniti Warranty Flat Rate Manual and use the indicated flat rate time.

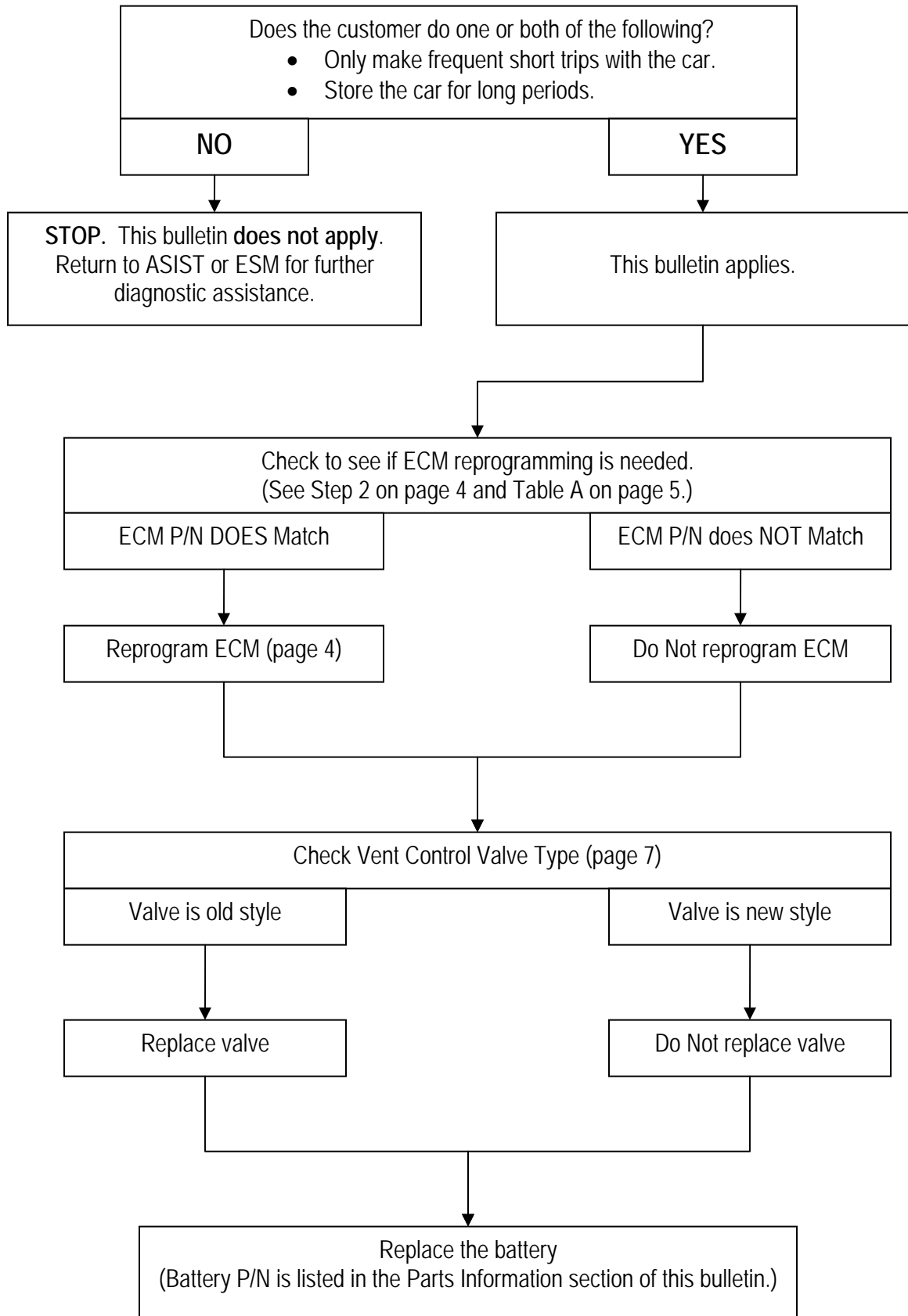
### AND/OR on the same repair line

DESCRIPTION	PFP	OP CODE	SYM	DIA	FRT
Replace Vent Control Valve	(1)	FC50AA	ZE	32	(2)

(1) Use C-III to obtain the current ECM Part Number from the vehicle and use it as the PFP.

(2) Reference the current Infiniti Warranty Flat Rate Manual and use the indicated flat rate time.

## Repair Overview



## SERVICE PROCEDURE

### ECM REPROGRAMMING

1. Begin the reprogramming procedure.

- If you are not familiar with the reprogramming procedure, click here. This will link you to the "CONSULT-III (C-III) ECM Reprogramming" general procedure.

#### CAUTION:

- Connect a battery charger to the vehicle battery.  
If the 12V battery voltage drops during reprogramming, the ECM may be damaged.
- Be sure to turn OFF all vehicle electrical loads.  
If a vehicle electrical load remains ON, the ECM may be damaged.
- For ECM reprogramming, the C-III MUST be connected to the VI using the USB cable.
- Be sure to connect the AC Adapter.  
If the C-III battery voltage drops during reprogramming, the process will be interrupted and the ECM will be damaged.

2. When you get to the ECM Reprogramming screen shown in Figure 1, confirm reprogramming is needed as follows:

A. On your C-III screen, look at the Part Number column (see Figure 1)

- If this column is **blank** (no part number listed), proceed to **VENT CONTROL VALVE TYPE CHECK**
- If a Part Number is listed, write it on the Repair Order.

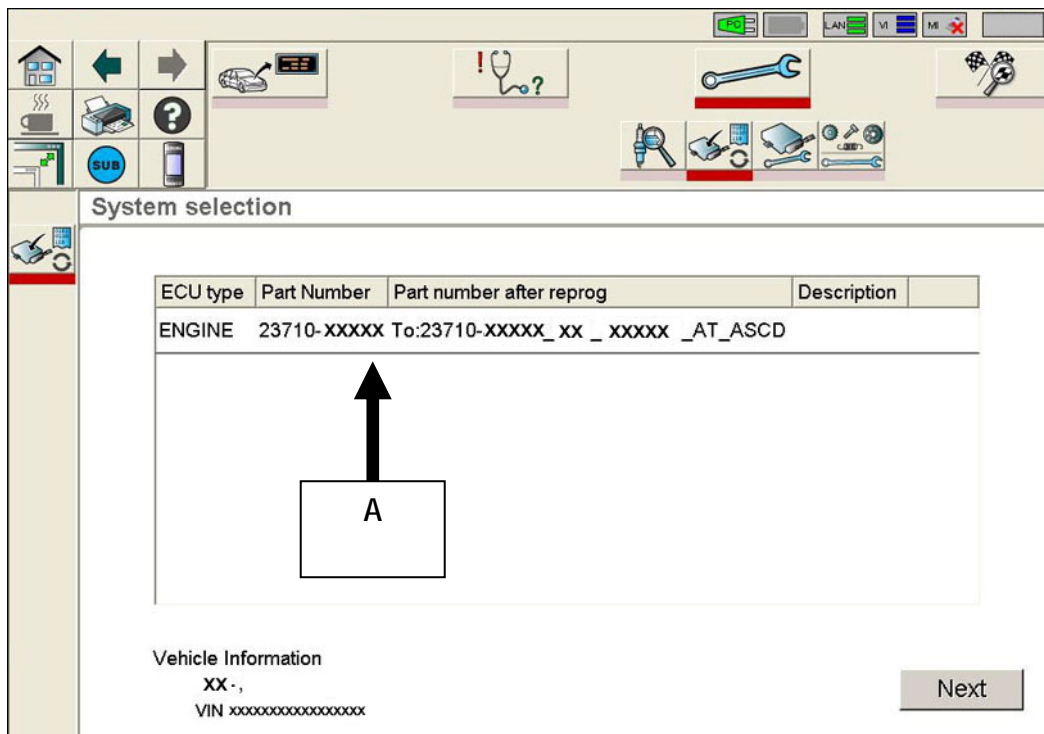


Figure 1

- B. Compare the Part Number you wrote down to the numbers in the **Current ECM Part Number** column in Table A.
- If there is a match, continue with the reprogramming procedure.
  - If there is not a match, proceed to **VENT CONTROL VALVE TYPE CHECK**.

**Table A**

Model	Vehicle Configuration	Current ECM P/N – 23710 -
2008 G37 Coupe	CV36_08MY_VQ37VHR_AT_ASCD	JK86A, JK86B
		JK70B, JK70C, JK70D, JK70E
	CV36_08MY_VQ37VHR_AT_ASCD_FPUMP	JK87A, JK87B
		JK71B, JK71C, JK71D, JK71E
	CV36_08MY_VQ37VHR_AT_ICC	JK88A, JK88B
		JK72B, JK72C, JK72D, JK72E
	CV36_08MY_VQ37VHR_AT_ICC_FPUMP	JK89A, JK89B
		JK73B, JK73C, JK73D, JK73E
CV36_08MY_VQ37VHR_MT_ASCD_FPUMP	JK78A	
	JK75B, JK75C, JK75D, JK75E	
CV36_08MY_VQ37VHR_MT_ICC_FPUMP	JK79A	
	JK77B, JK77C, JK77D, JK77E	
2009 G37 Coupe	CV36_09MY_VQ37VHR_AT_ASCD_2WD	1ND4A, 1ND4B, 1ND4C
	CV36_09MY_VQ37VHR_AT_ASCD_4WD	JU70A, JU70B, JU70C
	CV36_09MY_VQ37VHR_AT_ASCD_FPUMP_2WD	1ND6A, 1ND6B, 1ND6C
	CV36_09MY_VQ37VHR_AT_ICC_2WD	1ND5A, 1ND5B, 1ND5C
	CV36_09MY_VQ37VHR_AT_ICC_4WD	JU71A, JU71B, JU71C
	CV36_09MY_VQ37VHR_AT_ICC_FPUMP_2WD	1ND7A, 1ND7B, 1ND7C
	CV36_09MY_VQ37VHR_MT_ASCD_FPUMP_2WD	1ND8A, 1ND8B, 1ND8C
	CV36_09MY_VQ37VHR_MT_ICC_FPUMP_2WD	1ND9A, 1ND9B, 1ND9C

3. If you have performed ECM reprogramming, the screen in Figure 2 appears when reprogramming is complete.

Print this page and attach it to the Repair Order for Warranty documentation.



Figure 2

4. Proceed to VENT CONTROL VALVE TYPE CHECK on the next page.

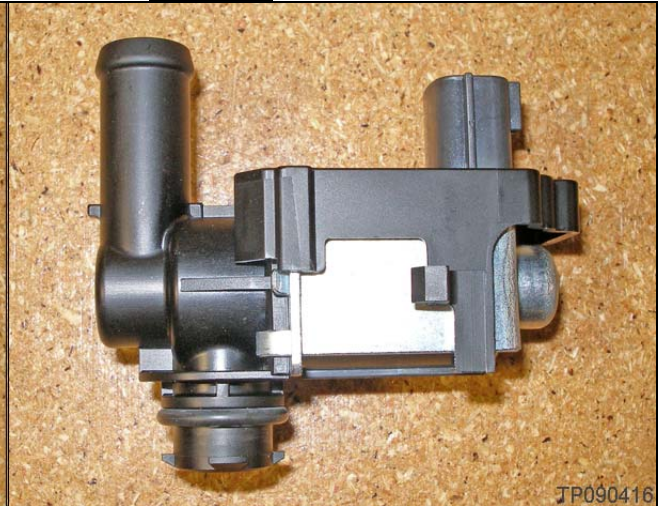
## VENT CONTROL VALVE TYPE CHECK

1. Compare the Vent Control Valve in your vehicle with the ones shown in the pictures below:

Old Style Vent Control Valve



New Style Vent Control Valve



- If it is the new style, DO NOT REPLACE IT, proceed to **BATTERY REPLACEMENT AND FINAL PROCESS.**
- If it is the old style, **REPLACE IT** with the one from the Parts Information section of this bulletin and then proceed to **BATTERY REPLACEMENT AND FINAL PROCESSES.**
  - Refer to the Service Manual for Vent Control Valve replacement information.

## BATTERY REPLACEMENT AND FINAL PROCESSES

1. Replace the battery.
  - The battery part number is listed in the Parts Information section of this bulletin.
  - Reset / Re-initialize Clock, Radio Presets, Power Windows, ATC, and Rear View Monitor. (Refer to Additional Service When Removing Battery Negative Terminal in the GI section of the appropriate Service Manual for details.)
  - Make sure the replacement battery is fully charged and ready for service before releasing the vehicle to the customer.
2. If the ECM was reprogrammed:
  - a. Erase DTCs from all systems. (During the reprogramming, DTCs will set in several systems and must be erased).
  - b. Test drive the vehicle. Make sure it operates correctly and the MIL is OFF.
    - If the MIL comes ON, refer to ASIST for further diagnostic information.
    - Diagnosis and repairs beyond the ones described in the **Repair Overview** are not covered by this bulletin.