

**Classification:**  
 AT09-009b

**Reference:**  
 ITB09-032b

**Date:**  
 September 28, 2009

## 7 SPEED A/T HARSH 4>3 DOWNSHIFT ON DECELERATION

This bulletin has been amended. The Claims Information has been updated.  
 No other content has been changed. Discard all earlier versions of this bulletin.

**APPLIED VEHICLES:**        2009 FX35 (S51) 2WD  
                                   2009 FX35/50 (S51) AWD  
                                   2009 G37 Sedan (V36) 2WD and AWD  
                                   2009 G37 Coupe (CV36) 2WD and AWD  
                                   2009 M35 (Y50) 2WD **ONLY**

**APPLIED TRANSMISSION:** 7 Speed A/T **ONLY**

**IF YOU CONFIRM:**

An Applied Vehicle has a harsh 4>3 downshift while coasting at 30>20 MPH, with closed throttle condition.

- Engine braking may also be felt under the same driving conditions.

**ACTIONS:**

1. Refer to Step 2 in the Service Procedure to confirm this bulletin applies to the vehicle you are working on.
2. If this bulletin applies, reprogram the TCM.

**CLAIMS INFORMATION**

Submit a Primary Failed (PP) type line claim using the following claims coding:

DESCRIPTION	PFP	OP CODE	SYM	DIA	FRT
Reprogram TCM (includes Initialization)	(1)	JE99AA	BF	32	(2) (3)

- (1) Reference the electronic parts catalog and use the applicable transmission assembly as the PFP.
- (2) Reference the current Infiniti Warranty Flat Rate Manual and use the indicated FRT.
- (3) FRT allows adequate time to access DTC codes and reprogram TCM. No other diagnostic procedures subsequently required. Do NOT claim any Diagnostic Op Codes with this claim.

**IMPORTANT:** The purpose of ACTIONS (above) is to give you a quick idea of the work you will be performing. You **MUST** closely follow the entire SERVICE PROCEDURE as it contains information that is essential to successfully completing this repair.

Infiniti Bulletins are intended for use by qualified technicians, not 'do-it-yourselfers'. Qualified technicians are properly trained individuals who have the equipment, tools, safety instruction, and know-how to do a job properly and safely. NOTE: If you believe that a described condition may apply to a particular vehicle, DO NOT assume that it does. See your Infiniti dealer to determine if this applies to your vehicle.

## SERVICE PROCEDURE

1. Connect CONSULT III (C-III) to the vehicle to begin the reprogramming procedure.
  - If you are not familiar with the reprogramming procedure, click here. This will link you to the "CONSULT- III (C-III) TCM Reprogramming" general procedure.

### CAUTION:

- Connect a battery charger to the vehicle battery.  
If the 12V battery voltage drops during reprogramming, the TCM may be damaged.
- Be sure to turn OFF all vehicle electrical loads.  
If a vehicle electrical load remains ON, the TCM may be damaged.
- For TCM reprogramming, the C-III MUST be connected to the VI using the USB cable.
- Be sure to connect the AC Adapter.  
If the C-III battery voltage drops during reprogramming, the process will be interrupted and the TCM will be damaged.

2. When you get to the TCM Reprogramming screen shown in Figure 1, confirm this bulletin applies as follows:
  - A. On your C-III screen, look at the **Part Number** column (see Figure 1 example).
    - If this column is **blank** (no part number listed), this **bulletin does not apply**.
    - If a Part Number (P/N) is listed, write it on the Repair Order and then go to Step B.

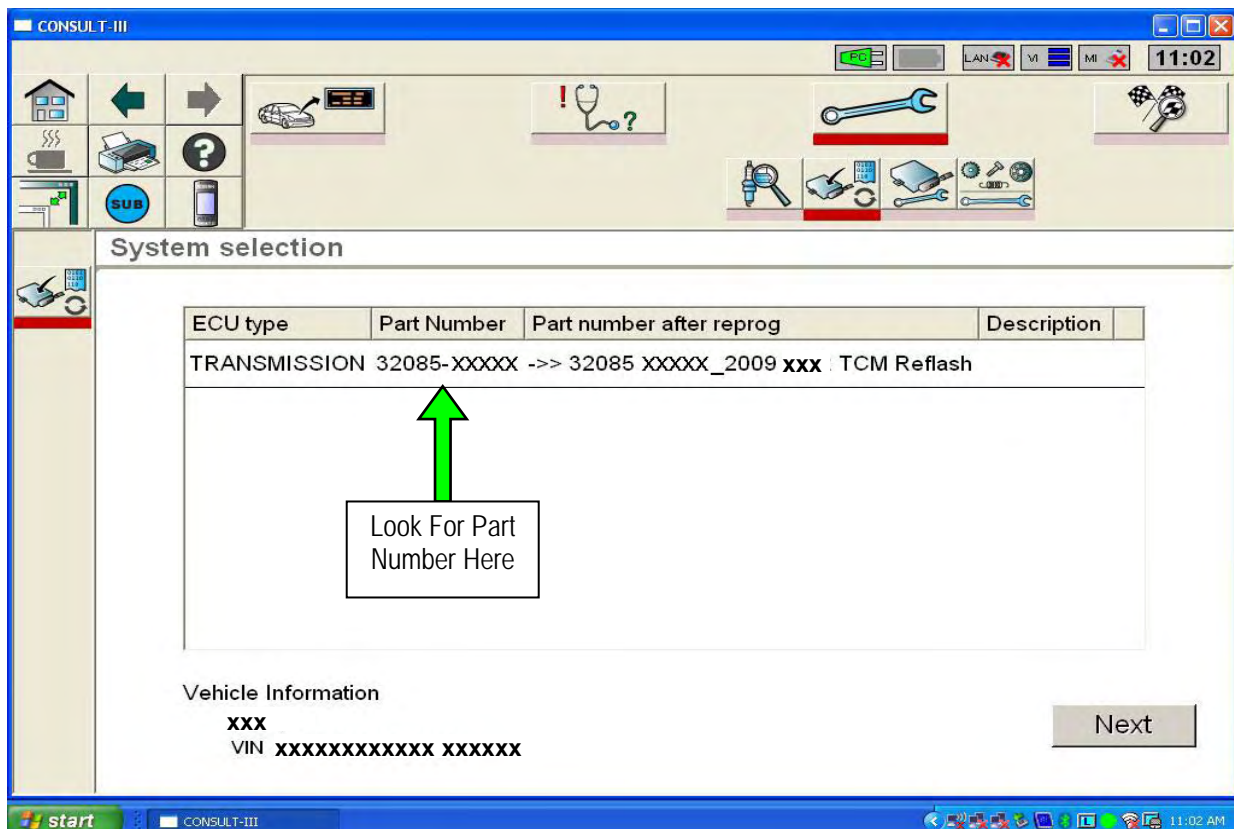


Figure 1

B. Compare the P/N you wrote down to the numbers in the **Current TCM P/N** column in **Table A** below.

- If there is a match this bulletin applies. Continue with the reprogramming procedure.

**NOTE:** If there are two lines (two reprogramming options) on your C-III screen, use the one that **does not** have the message "Caution! Use ONLY with ITBXX-XXX".

- If there is not a match this bulletin does not apply.

**Table A**

Model	Vehicle Configuration	Current TCM P/N
2009 FX35 2WD	S51 VQ35HR Rear Wheel Drive	31039 1XJ8E
	S51 VQ35HR Rear Wheel Drive	31039 1XJ6C
	S51 VQ35HR Rear Wheel Drive	31039 1CC3A
2009 FX35/50 AWD	S51 VK50VE AWD	31039 1XR2B
	S51 VK50VE AWD	31039 1XR2A
	S51 VK50VE AWD	31039 1CA4A
	S51 VK50VE AWD	31039 1CA3A
	S51 VQ35HR AWD	31039 1XJ9A
	S51 VQ35HR AWD	31039 1XJ6D
	S51 VQ35HR AWD	31039 1CB3A
2009 G37 Sedan	V36 VQ37VHR Rear Wheel Drive	31039 1XJ4A
	V36 VQ37VHR AWD	31039 1XJ4B
2009 G37 Coupe	CV36 VQ37VHR Rear Wheel Drive	31039 1XJ4E
	CV36 VQ37VHR AWD	31039 1XJ5A
2009 M35	Y50 VQ35HR Rear Wheel Drive	31039 1XJ8D
	Y50 VQ35HR Rear Wheel Drive	31039 1DV1C

3. If this bulletin applies and you have performed TCM reprogramming; when reprogramming is complete, the screen in Figure 2 appears.

Print the page from C-III (C-III page example below) and attach it to the Repair Order for Warranty documentation.



Figure 2

4. Test drive the vehicle and make sure the incident is reduced.

